

**ELECTRICAL TESTING,  
MEASURING, SAFETY &  
CONDITION MONITORING**



Electrical Safety  
High Voltage & Live  
Line Working  
Equipment  
And Tools



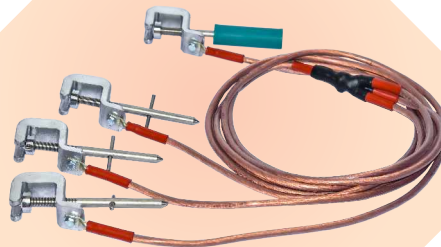
Portable  
Earthing  
Equipment,  
Discharge  
Rods And  
Operating  
Rods



Vacuum  
Tester



High Voltage &  
High Current  
Test Equipment



Earthing Cables  
& Clamps

technology for the powerful



## (Electrical Safety, Live Line Working, High Voltage High Current and Condition Monitoring Equipment )

### Overview

HVTI offers a wide range of Electrical Testing, Condition Monitoring, Measuring and Electrical Safety equipment for Power Plants, Transmission & Distribution Systems, R&D Institutions and Heavy Industries. HVTI has carved a niche for itself in Indian Power Sector and Heavy Industries Sector. We offer an exhaustive range of equipment which comprises of equipment manufactured by us and from renowned manufacturers being represented by us. HVTI also sets up Electrical Laboratories on turn key basis from concept to commissioning. Our Sister organization Technology Products has vast experience of over 35 years in design and development of these high end equipment and has developed many products for the first time in the country.

In order to maintain the quality standards and for our R&D activities a well-equipped laboratory is available at our works with High Voltage Test facilities, Precision Test and Calibration facilities and an advanced machining facilities.

We have a team of highly experienced designers, engineers and technicians who have been trained at some of the leading organisations and research facilities in India as well as abroad.

### Core Values

**01.** Client Focus  
As trusted advisors everything we do is valued by our clients.

---

**02.** Quality  
We are proud to stand behind the quality of work we deliver.

---

**03.** Integrity  
We always act with integrity through honesty, fairness and accountability.

---

**04.** Team Work  
As a family we ask for help and help when asked.

---

**05.** Fun  
We work with passion, act professionally and have Fun while we are doing it.

---

# CONTENTS



## ELECTRICAL SAFETY EQUIPMENT

- Insulated Sticks & Operating Rods
- Discharge Rods & Portable Earthing Equipment
- Soft Discharge Rods
- Portable Earthing Equipment
- 3 Phase type and 1 Phase Type Grounding Equipment
- Low Voltage Discharge Rods
- DO Fuse Operating Rods
- Rescue Sticks
- Drop Out Fuse Tool and Operating Rods
- Phasing Out Sticks
- High Voltage Detectors

## HIGH VOLTAGE AND HIGH CURRENT TEST SYSTEMS

- High Voltage AC Test Kits
- High Voltage DC Testing Kits
- Primary Current Injection Kits
- Secondary Current Injection Kits
- Vacuum Circuit Breaker Bottle Test Sets

## PARTIAL DISCHARGE TESTING EQUIPMENT

- AE-150 Partial Discharge pinpointing system for Large Transformers
- XDP-II Portable Partial Discharge Detector
- PD-LT Partial Discharge Detector for Overhead applications
- PD Annunciator - PD Alarm System for Switchgears
- ULD-J0' N Ultrasonic Corona & Arcing Detector
- Sensors and Accessories for Partial Discharge Applications

## SUB-5TATION TESTING EQUIPMENT

- ART-3D Automatic Transformer Turns Ratio Testers
- CTTx2 & CTTx5 Current Transformer Testers
- WRT-10D Winding Resistance Tester with Demagnetisation
- DOC-3 - Distribution Transformer Tester
- LRM-10 / DRM -10A -High precision digital 10A micro-ohm meters

## INFRARED THERMAL IMAGING CAMERAS

- PK80 — Entry Level Infrared Camera
- D-300 Mid Range Infrared Camera
- D-600 Advanced Level Infrared Camera
- G-96 Professional Infrared Camera
- V Series — SFP Gas Leakage Detection Camera

## CIRCUIT BREAKER TESTING EQUIPMENT

- SA-100 Series Advanced Circuit Breaker Analysers
- Micro OHM Meter Mm100
- Micro OHM Meter Mm200
- Micro OHM Meter Mm600

## ELECTRICAL TEST BENCHES & MOTOR TEST SYSTEM

- Custom Built Test Benches and Solutions

## ELECTRONICS DESIGN & DEVELOPMENT

- Electronics Equipment Design, Development and Production

## Electrical Safety Equipment



HVTI Manufactures & Supplies Insulated Sticks in accordance to IEC 855 (Foam Filled) and IEC 61235 (Hollow) are used with our various Safety Equipment and Live Line Working Equipment. The Insulated sticks conforms to dielectric strength of 100KV/feet. These are available in various configurations and diameters. The length of the sticks can be easily extended by connecting one after another using convenient snap fitting mechanism. All the safety equipment have been type tested as per various IEC/IS standards to ensure the reliability and safety in field.



*Insulated Sticks*

### Insulated Sticks

- Available in wide range for voltages from 1KV to 765KV in
- Lengths available from 500mm to 9 Meters
- Add on Type and Telescopic Configurations
- Hollow Type as per IEC 61235 and Foam Filled Type as per IEC 60855 available
- Universal Sun Rise Connector available

## Discharge Rods and Grounding Equipment

These are used to discharge dead systems and installations having limited fault levels. These are highly efficient for Discharging electrical equipment having high Capacitances like Capacitor Banks and Cables and equipment having high Inductances like Reactors and Transformers. Controlled Discharging is achieved using our special Non Inductive Carbon Discharge Resistances. Discharge Rods are available for voltage ranges from 11KV to 765KV.

The Discharge Rods/ Portable Earthing Equipment offered by us are Type Tested in accordance to Standards IEC 61235, IEC 61230, IEC 60855, IEC 60060, IS 16622, IS 13770, IS 2071

### Soft Discharge Rods with Built in Carbon Discharge Resistor HVTI-DR Series

- Available for Voltage Ranges 11KV, 33KV, 66KV & 100KV
- Inbuilt Carbon Discharging Resistor in various ratings
- Direct Discharging and Controlled Discharging Hooks Provided
- Various configuration of Cables from 6mmSq to 35mmSq available



### Soft Discharge Rods for with Removable Discharge Resistor TP-DR Series

- Available for Voltage Ranges 11KV to 765KV
- Removable Carbon Discharging Resistor in various ratings which can be replaced with Copper Hook also for hanging
- Direct Discharging and Controlled Discharging Hooks Provided
- Various configuration of Cables from 10mmSq to 35mmSq available



## Portable Earthing Equipment (Discharge Rod) for High Fault Levels : TP-PEE Series

Portable Earthing Equipment also called as Discharge Rods are safety equipment designed for discharging & grounding of dead equipment. The system is designed for high fault levels from 4.7KA to 40KA per second or higher so that even if during shut downs, when technicians are on the job, by mistake if the supply/feeder is switched ON, the Portable Earthing Equipment saves human life as well as equipment under maintenance. Special Line End & Earth End Clamps along with operating socket and earthing lead are used for this equipment. The Line End Clamps, Earth End Clamps & operating sockets are made of very special aluminium alloys which can withstand high short circuit currents. Portable Earthing Equipment is Type Tested as per IEC 61230 / IEC 61235 / IEC60855. The earthing cables are tested for short circuit ratings as per IEC/IS standards

Insulated sticks are available in lengths from 1 m to 7.75m in Add on Type or Telescopic configurations

Special Flexible Grounding Cables are available from 10mmSq to 95mmSq. Copper or upto 150mmSQ Aluminium, The Earthing Cables are available in Transparent or bright coloured insulation. The Earthing Cables conforms to IEC 61230

### Line End Clamps

Line End Clamps are available in various designs and configurations for clamping on different types of ACSR Conductors and Tubular Bus Bars. These are suitable for fault currents upto 40KA/1 sec



6-28mm



90 to 120mm



13-40mm



8-35mm



19-65mm  
& 15-90mm



### Special Earthing Cables

We offer a broad range of special grounding cables. Cables are available from 10mmSQ to 95mmSQ Copper Flexible and from 25mmSQ to 150mmSQ Aluminum flexible. This category of Grounding cables are designed to withstand high fault levels from 4KA to 40KA. Available in Yellog/Green, Transparent and Orange colours. The cables are designed and type tested in accordance to IEC 61230

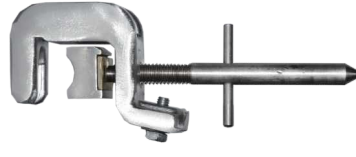


## Earth End Clamps

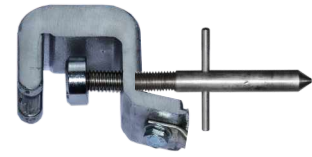
Earth End Clamps are available in various designs and configurations for clamping on Earth Bus Bars, Transmission Tower Structures, Tapered Bars and also for Fixed Ball Points. Suitable for clamping thickness upto 30mm and fault currents upto 40KA/1 sec



EE-30-F  
With Spike End



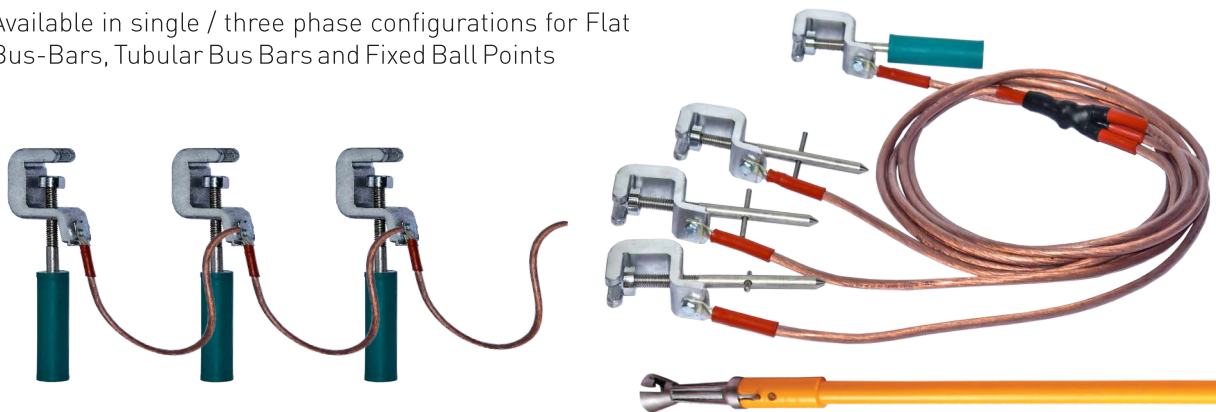
EE-30-R  
With Swivel End



EE-30-B  
With Ball Point End

## Low Voltage Discharge Rods

Available in single / three phase configurations for Flat Bus-Bars, Tubular Bus Bars and Fixed Ball Points



## Portable Earthing Equipment (Discharge Rod) – 3 Phase Type with 3 sets of Removable Line End Clamps/Cables

In this configuration clamps are applied from remote just by turning the insulated operating pole and the operator never comes in contact with any conductor, so it is highly safe system. Using the common operating pole, clamps are applied on each phase one by one. On top of Common Operating Pole an operating socket is provided using which one by one the Line End Clamps are applied and removed



## Portable Earthing Equipment (Discharge Rod) 1 Phase Type with Line End Clamps / Cables Permanently Fitted on the insulated Stick

In this configuration the Line End Clamp is permanently mounted on the stick and cannot be removed. Therefore for Grounding a 3 Phase system 3 sets of Equipment with individual Clamps and Sticks would be needed

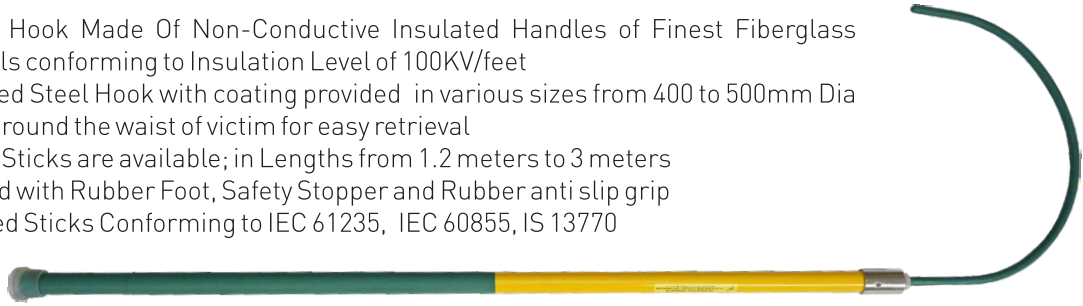


## Rescue Sticks

Rescue Sticks also called as Rescue Hooks are used for the retrieval of victims of electric shock, safeguarding the life of the rescuer. These are required in all live line areas as part of Health & Safety risk assessment.

Features

- Rescue Hook Made Of Non-Conductive Insulated Handles of Finest Fiberglass Materials conforming to Insulation Level of 100KV/feet
- Hardened Steel Hook with coating provided in various sizes from 400 to 500mm Dia to grip around the waist of victim for easy retrieval
- Rescue Sticks are available; in Lengths from 1.2 meters to 3 meters
- Provided with Rubber Foot, Safety Stopper and Rubber anti slip grip
- Insulated Sticks Conforming to IEC 61235, IEC 60855, IS 13770



## Drop Out (DO) Fuse Operating Rods

The DO (Drop Out) Fuse Operating Rod Consists of F Class Insulated Operating Rod with DO Fuse Gripping attachment. These are used for Operating, Fitting and Retrieval of overhead DO fuses remotely from ground Level .

Features -

- Available in Lengths upto 7.5 M
- Spring Loaded Fuse Catcher, Fuse Operating Lever and Fuse Jaw for Fitting and Retrieval of DO Fuses
- Adjustable Length of Fuse Claw tool to suit various sizes of DO Fuses
- Insulated Sticks Conforming to IEC 61235, IEC 60855, IS 13770

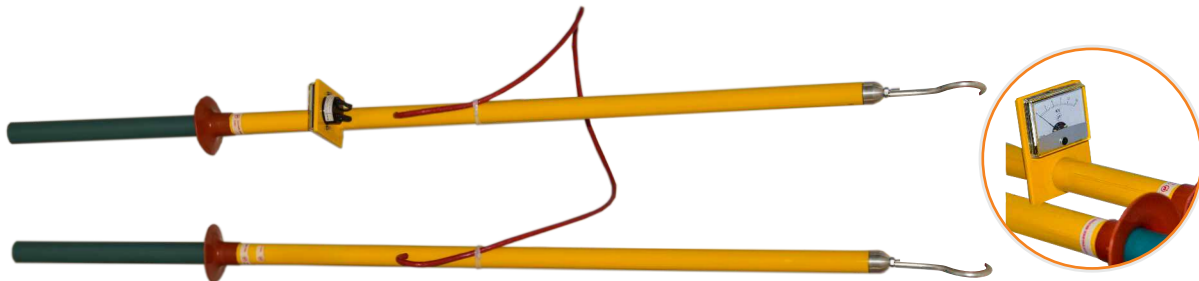


## Phasing Out Sticks

Phasing Out Sticks are used to phase out two sources of supply directly at high tension level without the use of Pts.

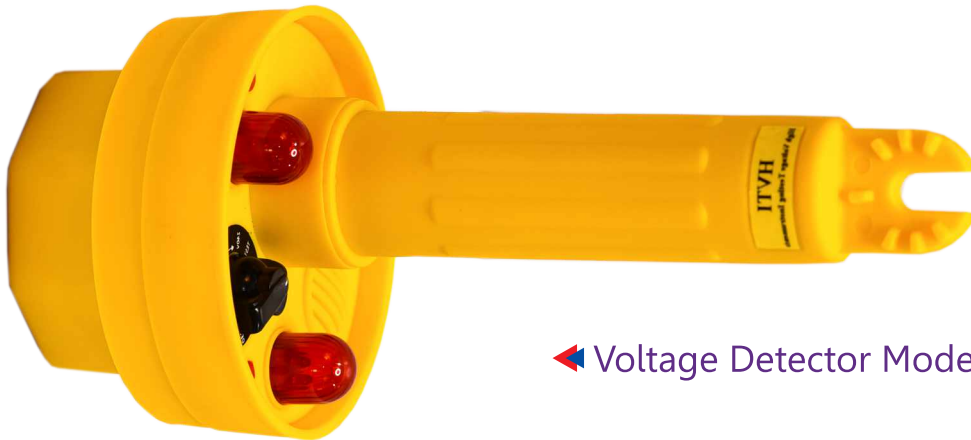
TYPE	: Bipole Type Hand Held with KV Meter
RANGE	: 15KV AC & 36KV AC Models (Covering 0 to 15/36KV)
NO. OF POLES	: 2 (Two)
INDICATION	: Direct Voltage read out on the KV meter. (When two sources are in Phase, potential difference is minimum & when two voltage are out of phase, potential difference is maximum)
PROTECTION	: Inbuilt HV Protective Resistors against shorts and grounds
CARRYING CASE	: Padded Nylon or Hard carrying case for storage and transportation.

Insulated Sticks Conforming to IEC 61235, IEC 60855, IS 13770





## High Voltage Live Line Detector



◀ Voltage Detector Model TP-S9

HVTI Offers next generation High Voltage Detector TP-S9, one of the most advanced voltage detector. Voltage Detectors are very important and essential Safety Equipment for engineers and Technicians working in Medium Voltage and High Voltage Installations.

This comes handy as one of the most important Equipment for warning personnel working in High Voltage establishments to rule out presence of Voltage/Charge so that possibility of accidents can be minimized.

### FEATURES :-

- ▶ High Intensity Light & Sound Indication
- ▶ Operates in Contact as well as Non Contact Modes
- ▶ Sensitivity Control in various steps available in Voltage Ranges from 240V to 765KV
- ▶ Automatic Continuous Inbuilt Self-Test Function and Battery Test Function
- ▶ Directional Voltage sensing capability
- ▶ Uses easily available 1.5V aa size Battery as well as Universal "C" Size R14 Battery
- ▶ Universal Sunrise connector, fits all the Universal Connectors
- ▶ Rugged Construction IP66 Weather proof and Shock and Vibration compliance

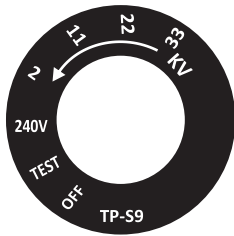
### APPLICATIONS :-

- ▶ Safety tool for Engineers and Linesmen while working in Low Voltage/Medium Voltage and
- ▶ Extra High Voltage installations
- ▶ Identifying Live Conductors/Objects
- ▶ Suitable for Indoor & Outdoor Operation applications
- ▶ Checking Induction Level
- ▶ Fault finding in unshielded cables.
- ▶ Tracing live cables above and below ground.
- ▶ Working in Indoor Low Voltage/Medium Voltage Panels
- ▶ Working in High Voltage and Extra High Voltage Sub-Stations, Distribution/Transmission Lines

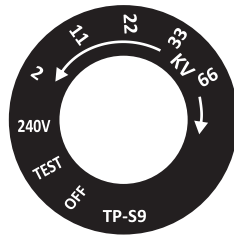
### Compliance To Standards:-

- ▶ CECERTIFIED
- ▶ CISPR 11 (Radiated Emission)
- ▶ IEC 61000 (Electrostatic Discharge Immunity, Magnetic Field Immunity, Pulse Freq. Magnetic Field Immunity)
- ▶ IEC 60028-2-6, IEC 60068-2-27 (Shock and Vibration resistance for mechanical strength)
- ▶ IEC 61243 (Environmental Tests, Leakage Current Test in Dry and Wet Conditions etc.)
- ▶ IEC 60529 (Encapsulation and Protection from Environment IP 66)
- ▶ IEC 61230, IEC 613235, IEC 60855, IEC 60060 ( For Conformity of Insulated Sticks)

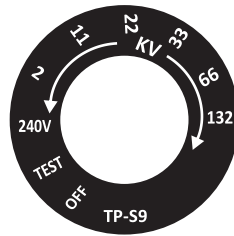
## Standard Models



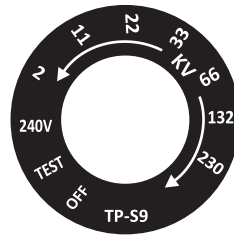
TP-S9-33



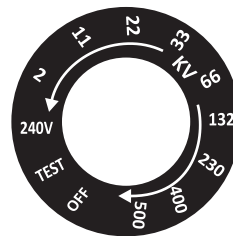
TP-S9-66



TP-S9-132



TP-S9-230



TP-S9-500

**OTHER CUSTOMISED  
RANGES ALSO  
AVAILABLE**



### SPECIFICATIONS:-

Voltage Range :	110V to 765KV AC (check the Ordered Voltage Rating)
Light Source :	6 High Intensity Leds
Led Sound Source :	Piezo Electric Buzzer →95 DB @ 10cm
Operating Temp.:	-10 to +65 Deg C
Humidity :	Upto 95% Non Conensing
Batteries:	3xAA Size Pencil Cell or C Size R14 Batteries
Battery Life:	More Than 250 Hours In Idling Mode More Than 70 Hours In Indicating Mode
Weight :	(with Batteries) ←0.45kg
Dimensions	L= 26x12x12 cm
Accessories :	Supplied With Carrying Case Batteries

### CERTIFICATIONS:-

Safety :	Detector: IEC 61243-1, Sticks: IEC 61235, IEC 60855, IS 2071
CE Certification	CISPR11: 2015+A1: 2016+A2: 2019 IEC61000-4-2:2008, IEC61000-4-3:2020, IEC4-8:2009
Encapsulation :	IP66 Certified (IEC 60529)
Shock and Vibration :	Vibration 2.5g IEC 60068-2-6, Shock 15g IEC 60068-2-27

## Accessories For Voltage Detector



Battery Chamber  
S9BC



Carrying Case  
S9CC



Battery - 3xR14  
or 3xAA Pencil Cell



Sunrise Connector  
S9SNC



Sunrise Connector  
Screw S9SW



Battery Converter



Universal Sunrise Stick, Nylon Connector or Aluminium Connector



Connector For  
Operating  
Socket



HOT STICK OPERATION



HAND OPERATION



# High Voltage and High Current Testing Systems

## High Voltage AC Testing Kits

HV Testing Kits are used for testing of Motors, Generators, Switchgears, Cables, Transformers and other electrical equipment. These are used for testing & commissioning of HV electrical equipment. High Voltage AC Testing Kits are available in ratings from 25KV to 300KV AC in various mA and KVA Ratings

### Features :

- The kits are available with Automated as well as Manual Control Panels and Control Desks.
- Automated Controls have microprocessor based controls with touch screen interface and various programmable parameters.



Resin Cast Dry Type Test Transformers available in ratings from 25KV to 150KV. The transformers are highly compact and suitable for field testing requirements.

Oil Filled Test Transformers available in ratings of 50, 70, 100, 150, 200 & 300KV. The transformers are highly compact and have option of tertiary metering winding. Suitable for Laboratory or field use. These are also available in PD Free designs.

## High Voltage DC Testing Kits

HV Testing Kits are used for testing of Cables, Switchgears, Generators, Transformers and other electrical equipment. These are used for testing & commissioning of HV electrical equipment. High Voltage DC Testing Kits are available in ratings from 15KV to 300KV DC in various mA and KVA Ratings.

Conventional HV DC Testing kit with Transformer – Rectifier Design are available in ratings from 15KV to 200KV and 10 to 200mA

Ultra Light Compact HV DC Testing kit with SMPS based Design are available in ratings of 60KV to 300KV with current ratings of 5mA



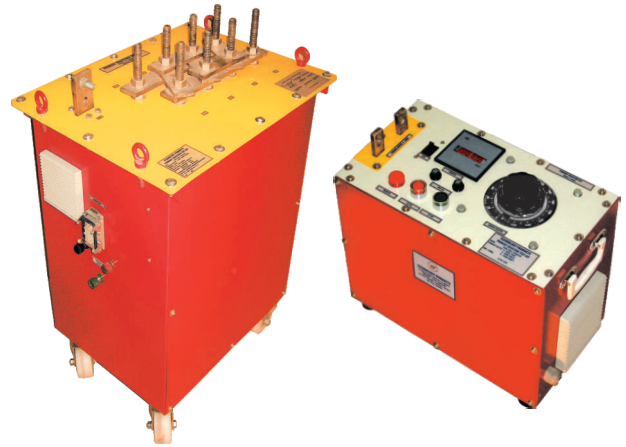
Model TP-605D (60KV, 5mA)

Model TP-1205D (120KV, 5mA)

## Primary Current Injection Testing Sets

Primary current injection kits are used to test and commission Circuit Breakers, Bus Bars, CTs, Relays, MCCs, PCCs etc. These are also used for high current injection and simultaneously measuring voltage drops and hot spots in bus-bar joints, circuit Breaker Contacts etc.

Primary Current Injection Test Sets are available in current ratings from 500A to 10000A and in short time duty as well as continuous operation duty.



Controls are available in Automated as well as Manual versions. The automated controls also have features like CT ratio measurement etc.

Light weight portable kits of 1000A and 2000A with full load operation time of 3 minutes also available for field testing.

## Secondary Current Injection Testing Sets

The Secondary Injection Test Sets are used to test static, attracted armature, induction type, thermal & directional relays & CTs etc. These are available in standard ratings from 30A to 200A. AC and DC Voltage outputs are also available as options. High resolution timer of 0.1mS and NO/NC relay interface are also provided for testing relays etc.



## Vacuum Circuit Breaker Bottle Test Sets

These compact testing kits are highly suitable to test integrity of VCB Bottles and Interrupters. The kits are microprocessor controlled which precisely analyses the Vacuum Bottles. These are available in standard ratings of 60KV and 80KV to test Vacuum Bottles upto 11KV and 33KV respectively.

Features :-

- Voltage Ranges Available 0-60KV & 0-80KV
- Fully Automatic Operation / Customisable Test Parameters
- 4.2" Touch Screen Display for Control and Parameters Display
- Lightweight & Portable ←13Kg with rugged strolley type design
- Conforms to IEC 61326, IEC60068-2-14, IEC60068-2-38, IEC60068-2-64, CISPR-11

# Partial Discharge Testing Equipment

## AE-150 Partial Discharge pinpointing system for Large Transformers

- Measures and Pin-points PD Location
- Live working on charged transformer
- Simultaneous processing of PD and 4 acoustic signals for de-noising
- Phase Sync for PrPD and Wireless communication with laptop
- UHF and HFCT sensors available for Electrical PD referencing
- High end algorithms for ease of use



## XDP-II Portable Partial Discharge Detector

- Efficient PD Detector and Analyser for Transformers, CT, PT, Switchgear, Cable, LA etc.
- Portable easy to use system with high end capabilities
- Universal Equipment adopts various sensors like Capacitive Spatula ,HFCT, TEV, Acoustic Contact and Acoustic Airborn, Switchgear Sensor, Differential Sensor etc.
- Online and Offline Testing Capabilities
- Waveform capture and software for detailed analysis

## PD-LT

Partial Discharge Detector for Overhead Applications

### Applications :

- PD Detection in Cable Heads, Lightning Arrestors, Insulators, Bushings etc.
- Easy and safe use with Hot Stick
- High sensitivity capacitive sensor with wireless measurement readings
- Compact, lightweight and battery powered for maximum flexibility



PD-LT™  
Measurement module

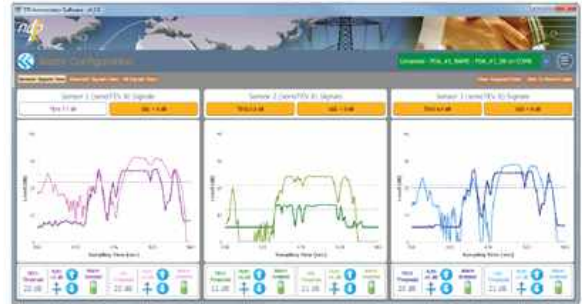


PD-LT™  
Display module



## PD Annunciator - PD Alarm System for Switchgears

- Continuous On Line PD Monitoring of Metallic Panels (Switchgears etc)
- Utilises TEC, Acoustic and HFCT Sensors
- Easy Installation, single or multiple modules in Daisy Chain
- Advanced software algorithms and Modbus connectivity for existng Scada



## ULD-40™ Ultrasonic Corona & Arcing Detector

- Ultrasonic detector for corona and arcing detection for predictive maintenance in electric utilities
- Built in acoustic sensor, Additional Parabolic Sensor with laser pointer and Contact type Acoustic sensor for Metal Clad Switchgears
- Suitable for Indoor Applications as well as Outdoor use
- Suitable for Electrical Inspections, General Mechanical Inspections and Pressurised vessel inspections



## Sensors and Accessories for Partial Discharge applications

A wide variety of Sensors, UHF Antenna, Band Pass Filters and other accessories are available for use with portable and online PD monitoring equipment



UHF Antenna for PD Detection in Transformer by inserting through Oil Drain Valve in On line Condition



The HFCT-20HD™ and HFCT-60HD™ are high frequency current transformer sensors designed for partial discharge detection on electric apparatus' ground returns.

## Sub-Station Testing Equipment

### ART-3D Automatic Transformer Turns Ratio Testers

- One of the most versatile and accurate ratiometer in market
- Testing transformers in accordance to IEEE C57.12.90&IEC 60076 standards
- Test Voltage from 1V to 275V and ratio ranges upto 50000
- Tests secondary and tertiary windings in a single sequence, on all taps
- Real 3 phase test voltage output
- Manual and automatic tap changer control
- Touch screen display, works with gloves
- Easy data transfer, report creation & remote control from a computer
- Suitable for transformers upto 800KV



### CTTx2 & CTTx5 Current Transformer Testers

- Various parameters of the CT like CT Saturation/Excitation, Knee Point (as per ANSI10/50 IEC 60044, IEEE 30, IEEE 45), Ratio, Polarity, Phase Angle and Burden are tested in a short time. All CT™ nameplate and equipment details are stored with the test result file.
- Built-in thermal Printer.
- Manual mode is available for trouble shooting and special diagnostic testing.
- Burden mode makes it possible to analyze the secondary circuit connected to the CT.
- Easy setup of test plans are created on the instrument.
- Automatic test report creation.

### WRT-10D Winding Resistance Tester with Demagnetisation

- High performance winding resistance tester for power transformers and large motor applications.
- High Accuracy 0.1% of reading
- High resolution with 4 ½ inch display, 0.1 μΩ
- Large, Color LCD display Full QWERTY keyboard for easy data entry
- Large internal memory
- Reporting software automatically generates a finished report from PC
- Built-in thermal Printer Remote
- Tap Changer circuit Stabilized reading indicator Protection against over voltage transients
- Timed mode for logging heat run testing





## DOC-3 - Distribution Transformer tester



- The NDB-DOC 3™ is a test instrument designed for distribution networks transformers from 5kVA to 3MVA
- Detects primary transformer short-circuit, open circuit, & secondary short circuits Visual and audible warning
- Designed to be operated without disconnecting the transformer's secondary windings from their loads.
- Powerful tool to check distribution transformers in quick and easy way

## LRM-10 / DRM-10A -High precision digital 10A micro-ohmmeters

- Potable Ohmmeters for various applications of contact resistance measurement like in Circuit Breakers, Tap Changers, Cable/Bus-Bars, Earth Bond etc.
- Extremely accurate and repeatable readings
- Lightweight and portable micro-ohmmeter designed to measure very low resistances from 0.01  $\mu\Omega$  to 200  $\Omega$ .
- Most accurate in its category.
- Much lighter and handier than other equipment in its category
- Shock resistant, it is suitable for all types of applications: work site or laboratory
- The LCD display is equipped with a backlight to allow work in any conditions



DRM-4015™  
Optional Double Hands  
probe kit



DRM-4017-35™  
Optional Kelvin clamp  
kit



DRM-4012™  
Optional Exothermic welding  
test probe (Cadweld®)

Different test probes and accessories are available with micro ohmmeters

# Infrared Thermal Imaging Cameras

## PK80 – Entry Level Infrared Camera

- 5 Inch Capacitive Touch Screen
- Additional Integrated Features
- Android 4.0 Platform Open Source and Expandable
- Perfectly intergrates tablet and thermal camera technologies
- Powerful analysis functions
- 8 Mega Pixel HD CCD
- Multifunction USB connector
- Can access the internet through WI-FI connection



## D-300 Mid Range Infrared Camera

- Newly Designed Platform having 384x288 pixel array
- High Speed Processing allows for Quick High Quality image output
- IR/Digital/Duo Vision Plus with advanced touchscreen
- Laser Range Finder & Adaptable LCD Display
- Motorised Lens with auto focus
- 5 MP High Definition Visual Camera
- Thermal Video Recording
- Easy to use interface and has Long Battery Life

## D-600 Advanced Level Infrared Camera

- Advanced High Resolution Detector with 640x480 pixel array format
- High Speed Processing allows for Quick High Quality image output
- IR/Digital/Duo Vision Plus with advanced touchscreen
- Laser Range Finder & Adaptable LCD Display
- Motorised Lens with auto focus
- 5 MP High Definition Visual Camera
- Thermal Video Recording
- Easy to use interface and has Long Battery Life



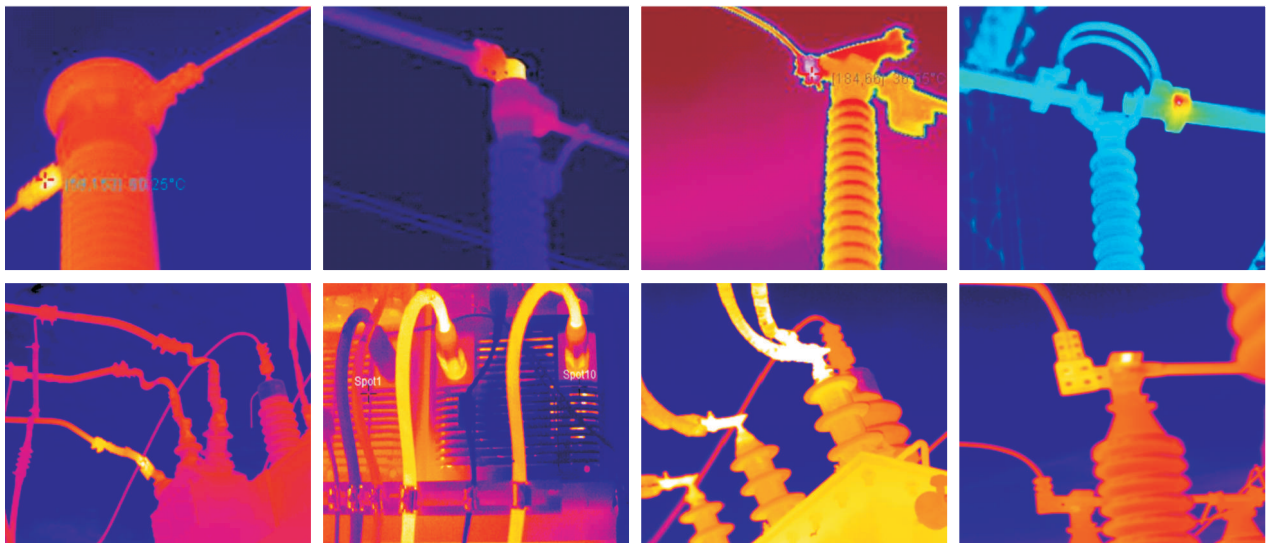
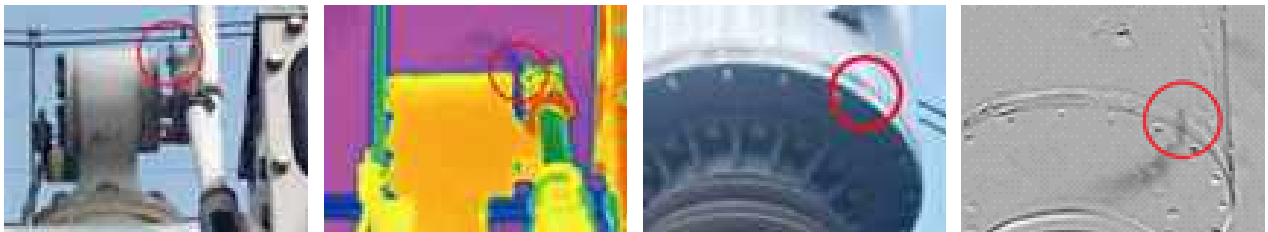
## G-96 Professional Infrared Camera

- High resolution 640X480 detector
- 5 inch detachable LCD with remote control
- Measurement Range -20°C to +600°C, up to +2000°C (Optional)
- Thermal video recording
- Motorised Lens with Auto Focus
- Detachable LCD Screen with Remote Control
- Measurement tools and advanced analysis



## V Series – SF6 Gas Leakage Detection Camera

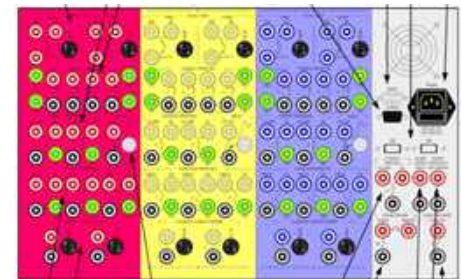
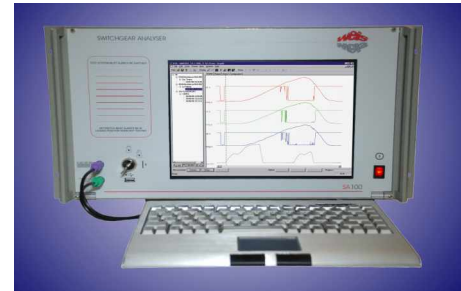
- Capable of Detecting Gas Leakages of very small magnitude
- Gas detection and accurate temperature measurement
- Extremely high thermal sensitivity
- Highly useful for SF6 breakers and Gas Insulated Switchgears
- Highly efficient and capable to detect SF6 gas leakages in minimum time



# Circuit Breaker Testing Equipment

## SA-100 Series Advanced Circuit Breaker Analysers

- One of the most advanced Breaker Analyser in market to test maximum parameters in single operation
- Can dynamically test 2 breaks per phase with both ends of breaker grounded
- Calculates inputs for Velocity and Acceleration for each channel
- Measurement of upto 12 Parallel Contact (PIR) Switching Resistors in a single test
- Inbuilt 2 channel DCRM
- Independent control of trip and close coil of each phase
- Host of other advanced features



### Micro OHM Meter MM100

Output Current : 100 A & 1200 A  
 Measurement Range : 0 to 1.999 mΩ or 19.99 mΩ  
 Resolution : 1 or 10 μΩ

### Micro OHM Meter MM200

Output Current : 100 A & 200 A  
 Measurement Range : 0 to 199.9 μΩ or 0 to 1999 μΩ  
 Resolution : 0.1 or 1 μΩ



### Micro OHM Meter MM600

Output Current : 600 A (upto 750 A DC)  
 Measurement Range : 0 to 199.9 μΩ or 0 to 1999 μΩ  
 Resolution : 0.1 or 10 μΩ



# Electrical Test Benches, Motor & Transformer Test Benches

HVTI Manufactures Various Types of Electrical Test Benches, Motor Test Benches and Transformer Test Benches. These are available in manual, semi-automatic and fully automatic versions. The fully automated Test Benches have Central Control Desk from which all the operations of the test bench are controlled and software also generates the report after test is completed. A central touchscreen panel with 17 to 22" display is provided for control and report generation. Remote control and monitoring facility available.

Output Ranges Available : 415V AC 3 Phase to 33KV AC 3 Phase

KVA Ratings available : from 10KVA to 1000KVA

Electrical Parameters Tested and Measured : I, V, KW, KVA, KVAR, PF, Hz, KWH, KVARH, KVAH, etc.

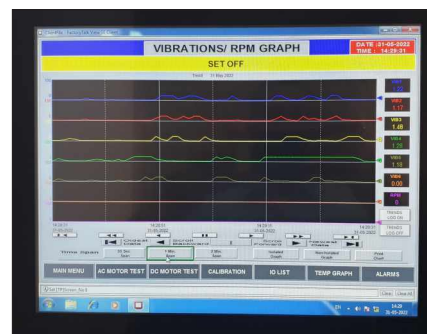
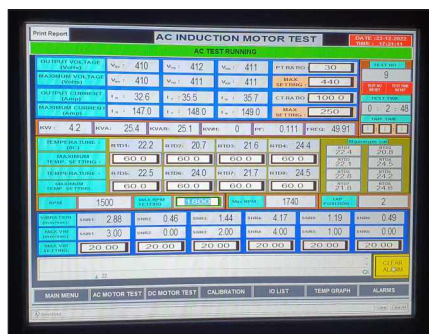
Sensors available for : RPM (Contact and Contact less sensors), Vibration, Temperature etc. ,

Motor Test Benches capable of testing High Power AC & DC Motor Test System suitable for performing on Three Phase Induction Motors, DC Motors, Synchronous Motors etc.

The Test Benches are manufactured based on customized specifications of the users.



Test Bench

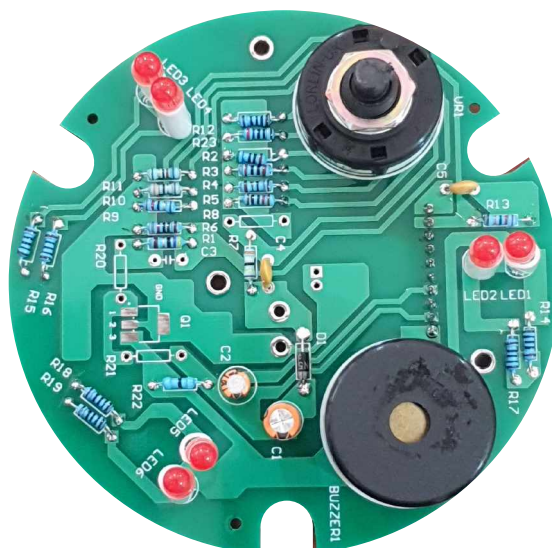
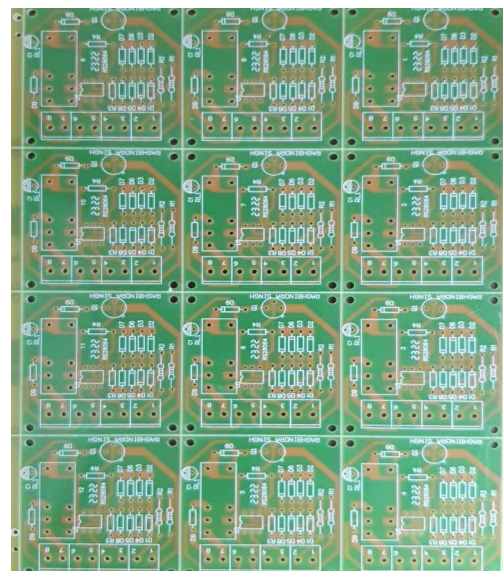
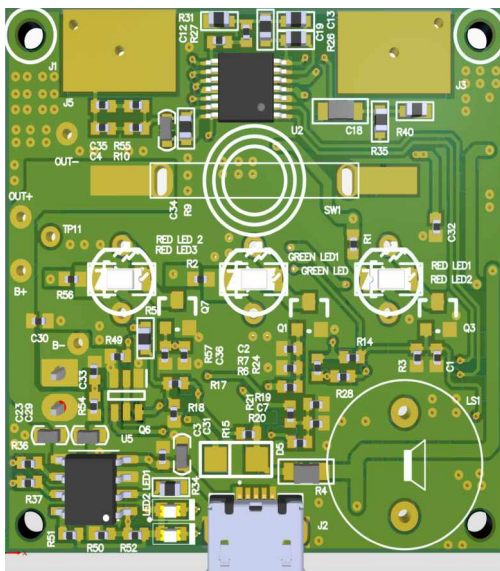


Touch Screen Controls & Display

# Design, Development & Production of Electronics Assemblies, PCBs, Firmware and Software

HVTI team has vast experience in design and development of Electronics products & assemblies for measuring and control technology from concept, prototyping, final product development to production. Advanced softwares are used for the design & development. Capability is available for design of single layer PCB to 8 layers in PTH and SMT types.

We have been able to achieve a number of projects in close collaboration with our customers and supplied custom-made products or OEM-solutions in a timely and cost-effective manner.



Notes...

A series of horizontal dotted lines providing a space for handwritten notes.

For detailed specifications please contact us...

Upgrading of equipment is a continuous process due to which the specifications may change...



Circuit Breaker  
Testing



Partial Discharge  
And Condition  
Monitoring  
Test Equipment



Transformer  
Testing



Thermal  
Imaging  
Cameras



Test Bench